



# TDE1 Polyclonal Antibody

<b>Catalog No</b>	YP-Ab-00531
<b>Isotype</b>	IgG
<b>Reactivity</b>	Human;Mouse;Rat
<b>Applications</b>	WB;IHC;IF;ELISA
<b>Gene Name</b>	SERINC3
<b>Protein Name</b>	Serine incorporator 3
<b>Immunogen</b>	The antiserum was produced against synthesized peptide derived from human SERC3. AA range:361-410
<b>Specificity</b>	TDE1 Polyclonal Antibody detects endogenous levels of TDE1 protein.
<b>Formulation</b>	Liquid in PBS containing 50% glycerol, 0.5% BSA and 0.02% sodium azide.
<b>Source</b>	Polyclonal, Rabbit,IgG
<b>Purification</b>	The antibody was affinity-purified from rabbit antiserum by affinity-chromatography using epitope-specific immunogen.
<b>Dilution</b>	Western Blot: 1/500 - 1/2000. Immunohistochemistry: 1/100 - 1/300. Immunofluorescence: 1/200 - 1/1000. ELISA: 1/20000. Not yet tested in other applications.
<b>Concentration</b>	1 mg/ml
<b>Purity</b>	≥90%
<b>Storage Stability</b>	-20°C/1 year
<b>Synonyms</b>	SERINC3; DIFF33; TDE1; SBBI99; Serine incorporator 3; Tumor differentially expressed protein 1
<b>Observed Band</b>	52kD
<b>Cell Pathway</b>	Cell membrane ; Multi-pass membrane protein . Golgi apparatus membrane ; Multi-pass membrane protein . ; Cytoplasm, perinuclear region . (Microbial infection) Upon HIV-1 infection, it is redirected to perinuclear region following interaction with HIV-1 Nef, excluding it from virions particles, thereby preventing subsequent antiviral defense activity (Probable). .
<b>Tissue Specificity</b>	Ubiquitous. Expression levels were increased fourfold to tenfold in lung tumor tissues compared with normal pulmonary tissues.
<b>Function</b>	function:May be involved in cellular transformation.,PTM:N-glycosylated.,similarity:Belongs to the TDE1 family.,tissue specificity:Ubiquitous. Expression levels were increased fourfold to tenfold in lung tumor tissues compared with normal pulmonary tissues.,
<b>Background</b>	function:May be involved in cellular transformation.,PTM:N-glycosylated.,similarity:Belongs to the TDE1 family.,tissue specificity:Ubiquitous. Expression levels were increased fourfold to tenfold in lung tumor tissues compared with normal pulmonary tissues.,



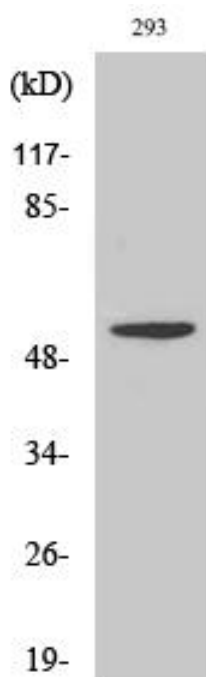
**matters needing attention**

Avoid repeated freezing and thawing!

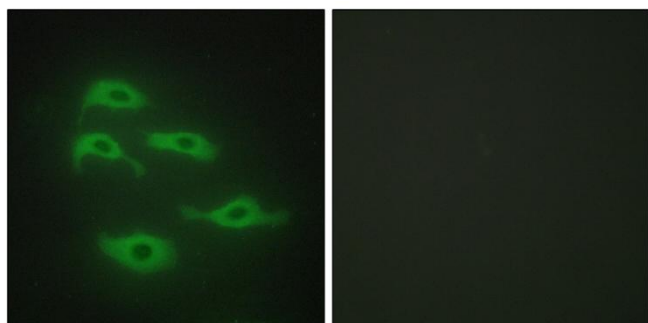
**Usage suggestions**

This product can be used in immunological reaction related experiments. For more information, please consult technical personnel.

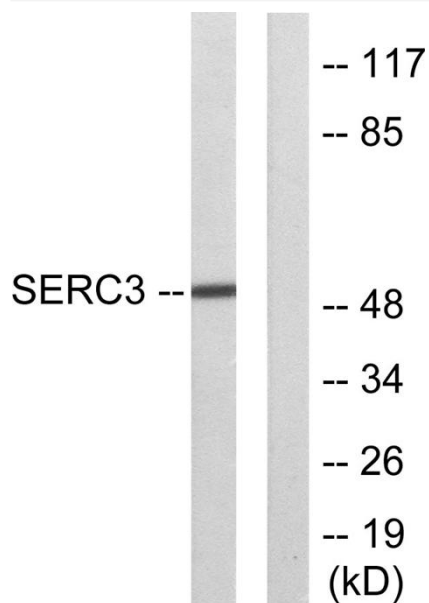
**Products Images**



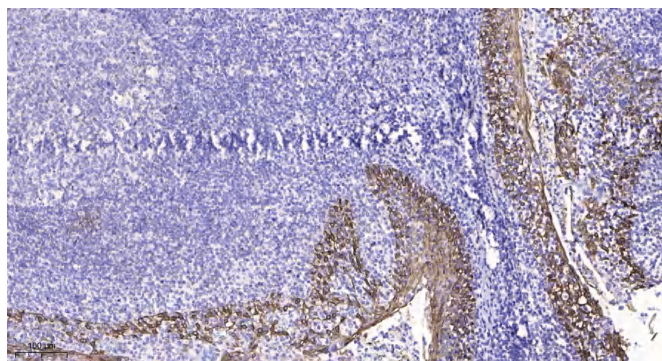
Western Blot analysis of various cells using TDE1 Polyclonal Antibody



Immunofluorescence analysis of HepG2 cells, using SERC3 Antibody. The picture on the right is blocked with the synthesized peptide.



Western blot analysis of lysates from 293 cells, using SERC3 Antibody. The lane on the right is blocked with the synthesized peptide.



Immunohistochemical analysis of paraffin-embedded human tonsil. 1, Antibody was diluted at 1:200(4° overnight). 2, Tris-EDTA,pH9.0 was used for antigen retrieval. 3,Secondary antibody was diluted at 1:200(room temperature, 45min).